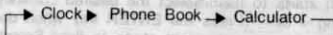


Databank With Currency

Basic Operations:

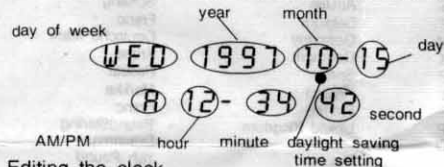
Press the MODE key to select the operating mode in the sequence:



It turns off after 4 minutes of no use. The clock is shown after 3 minutes of no use in any mode. Press the ON key to turn on the databank. The last mode when the databank is off is displayed.

1. Clock mode

The display shows the date, time and calendar of the home city:



Editing the clock

Press the SET key and hold for 2 seconds to edit the clock settings. The first digit starts to flash.

1111 997 10-15
 A 12-34 48

Press the → or ← key to select the editing position. Enter the digit 0 to 9 to change the settings. Press the AM/PM key to toggle between AM and PM setting. Press the ENTER key to confirm the setting entered or the CE key to cancel editing. The city name of home clock starts to flash.

HONGKONG 10-15
 A 12-34 48

Press the → or ← key to select the desired city of the home clock. There are 24 time zones selectable. Press the ENTER key to confirm the selected city. The display returns to normal clock and the clock starts. If there is no key press for 30 seconds, the display returns to normal and the settings are not saved.

12/24 hour display format

Press the 12/24 key to select between 12 and 24 hour display format when not editing the clock. This setting affects world time and alarm mode also.

Daylight saving time

Press the + key to turn on or off the daylight saving time of the home city. A small star mark is displayed above the second when daylight saving time is on.

Key tone

Press the key to toggle the key tone on or off.

2. World Time mode.

Press the WORLD key in clock mode to see the world time. The display shows the date, time, city name, city name of selected time zone, month, day.



Press the → key to see the date and time of the next time zone. Press the ← key to see the date and time of the previous time zone. All times are referenced with respect to the time of home city.

Time zone and city name

GMT	City name	GMT	City name
-11	MIDWAY	+01	PARIS
-10	HONOLULU	+02	CAIRO
-09	NOME	+03	JEDDAH
-08	SEATTLE	+04	DUBAI
-07	DENVER	+05	KARACHI
-06	CHICAGO	+06	DHAKA
-05	NEW YORK	+07	BANGKOK
-04	CARACAS	+08	HONGKONG
-03	BRASILIA	+09	TOKY
-02	SALVADOR	+10	SYDNEY
-01	AZORES	+11	NOUMEA
00	LONDON	+12	AUCKLAND

12/24 hour display format

Press the 12/24 key to select between 12 and 24 hour display format. This setting affects clock and alarm mode also.

Daylight saving time

Press the + key to turn on or off the daylight saving time of the world city. A small star mark is displayed above the second when daylight saving time is on.

Date/home city time display

Press the ENTER key to select between display of month/day of world city or the current time of the home city. A small star mark in front of the hour of home city time shows that the daylight saving time of home city is on.

LONDON 12:34
 P 4-34 53

Editing city name of the current time zone

One city name memory is available for entering custom city name. Select the desired time zone and press the SET key 2 seconds. The cursor starts to flash. Entering the characters of the city as in databank mode. Press the ENTER key to confirm the new city name.

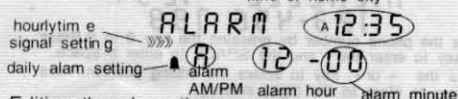
EUROPE 10-14
 P 5-34 58

Key tone

Press the key to toggle the key tone on or off.

3. Daily alarm mode.

Press the ALARM key in clock mode to see the daily alarm setting. The display shows the time of the alarm set and the current time.



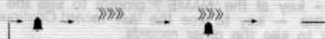
Editing the alarm time

Press the SET key and hold for 2 seconds to edit the alarm settings. The first digit starts to flash. Press the → or ← key to select the editing position. Enter the digit 0 to 9 to change the settings. Press the AM/PM key to toggle between AM and PM setting. Press the ENTER key to confirm the setting entered or the CE key to cancel editing.

The display return to normal daily alarm display and the alarm on icon is shown. The alarm set is automatically adjusted for daylight saving time of home city. If there is no key press for 30 seconds, the display returns to normal and the settings are not saved.

Daily alarm and hourly time signal setting

Press the key to select the settings in the sequence:



12/24 hour display format

Press the 12/24 key to select between 12 and 24 hour display format. This setting affects clock and world time mode also.

4. Phone Book mode.

The display shows the name prompt:

NAME?

Entering a new phone book record

Press the SET key to start entering a new record. The cursor on the first position starts to flash.

///

Select character A,B,C by pressing the key 1.The first pre select the first character 'A' and the second press select the character 'B',etc.Select other characters by pressing the key 0 to 9.Digit 9 also select the symbol ' '. Select the symbol ' ', ' ' and ' ' with the key '0'. Select the symbol ' ', ' ', ' ', ' ' and ' ' character by pressing the SPACE, +, -, x, and / key respectively.

MICHELLE///

Press the → or ← key to select the editing position.Press CE key to clear all the characters entered,press the CE key once more will abort the record.Press the ENTER key to confirm the name entered.The last phone number digit starts to flash. If there is no key press for 30 seconds,the display returns to the name prompt and the record is not saved.

MICHELLE 1234
123-456 789

Enter the phone number by pressing the key 0 to 9.Press the key to enter the ' ' and the SPACE to enter a space. Press the → or ← key to select the editing position.Press CE key to clear all the digits entered.

Press the ENTER key to confirm the phone book record entered and the display shows the 'STORED' prompt. The records are stored in alphabetical order.If there is no key press for 20 seconds,the display returns to the name prompt and the record is not saved.When the memory is full,the display shows the 'FULL' prompt and the record is not saved

Searching a phone book record
Search a desired record by entering the name.Use the same keys and procedure in entering the name of a new record.

Press the ENTER key to start the search.in entering the name of a new record.Press the ENTER key to start the search. The record with the same name or the nearest record is shown.Press the → to browse to the next phone book record or the ← key browse to the previous record.

Browsing the phone book records
Press the → key at the 'NAME?' prompt to see the first record and the ← key to see the last record.Continue pressing → or ← key to see the other records.

Deleting a phone book record
Display the desired record by searching or by the browsing record key → or ← . Press the CE and the 'DELETE?' prompt is shown.Press the ENTER key to confirm the action.

DELETE? 1234
123-456 789

Editing a phone book record
Display the desired record by searching or by the browsing record key → or ← . Press the SET key and the record can be edited.Press the ENTER key to go the phone book field. Press ENTER once more to save the change. Press CE key to clear all the characters entered,press the CE key once more to cancel editing.

Checking memory usage
Press the CAPA key to check the current memory usage. The percentage of free memory is shown:

FREE 97%

Setting password protection
Press the ON key at the 'NAME?' prompt to enter the password. the 'CODE?' prompt is shown:

CODE?

Enter the characters of the password.Use the same keys and procedure in entering the name of a new record.The maximum length of the password is 5.Press the ENTER key to confirm the password.After that.all the phone book records are locked and cannot be viewed.However,new phone book record can still be added.

Removing password protection
Press the ON key at the 'NAME?' prompt to enter the password. the 'CODE?' prompt is shown.

Enter the characters of the password.Use the same keys and procedure in entering the name of a new record.Press the ENTER key to enter the password.After that.all the phone book records are not locked and can be viewed.

5.Calculator and Currency Calculation mode.

CAL 12:34
-1'234'567890.

Press the digit key 0 to 9 and . to enter a number.Press the +, -, x, / to perform addition,subtraction,multiplication and division respectively.Press the M+key or doing memory addition.Press the M- key for doing memory subtraction. Press the MRC key to recall the number in memory.Press the MRC key once more to clear the memory.Press the CE key to clear any errors or the previous operand. Perform percentage calculations with the % key.

Currency conversion
There are 4 currency conversion rate memories. four rates with currency name selectable.The default names are ECU → USD,ECU → DEM,ECU → GBP and ECU → JPY. Viewing currency conversion rate
Press the AC key to clear display. Display the currency conversion rate.

Display the four rates by pressing the key C1,C2,C3 and C4.

ECU--->DEM 12:34
1.2345
ECU<---DEM 12:34
0.8 10044552

Setting new currency conversion rate
Press the SET key and hold for 2 seconds when displaying the rate ECU → DEM to set a new currency rate,the number clears to 0 and starts to flash:

ECU--->DEM 12:34
0.

Enter the desired new currency rate with the digit key 0 to 9 and ' '.

Press the SET key and hold for 2 seconds when displaying the other rates to set a new currency rate,the currency name on the left starts to flash.Select the desired currency name by pressing → or ← .Press the ENTER key when done and the currency name on the right starts to flash.Select the desired currency name by pressing → or ← .Press the

ENTER key again when done and the number clears to 0 and starts to flash.Enter the desired new currency rate the same way as above.

Available	currency name	
Abbr.	European Country	Currency
ECU	Europe	
ATS	Austria	Schilling
BEF	Belgium	Franc
DEM	Germany	Deutsche Mark
DKK	Denmark	Krone
ESP	Spain	Peseta
FIM	Finland	Markka
FRF	France	Franc
GBP	United Kingdom	Pound Sterling
GRD	Greece	Drachma
IEP	Iceland	Irish Pound
ITL	Italy	Lira
LUF	Luxembourg	Franc
NLG	Netherlands	Guilder
PTE	Portugal	Escudo
SKE	Sweden	Krona
Abbr.	Other Country	Currency
AUD	Australia	Australian Dollar
CAD	Canada	Canadian Dollar
CHF	Switzerland	Franc
CNY	China	Yuan
HKD	Hong Kong	Hong Kong Dollar
IEP	Ireland	Irish Pound
ILS	Israel	New Shekel
JPY	Japan	Yen
KRW	Korea	Won
NOK	Norway	Krone
NZD	New Zealand	New Zealand Dollar
RUR	Russian	Rouble
SGD	Singapore	Singapore Dollar
TRL	Turkey	Turkish Lira
TWD	Taiwan	New Taiwan Dollar
USD	USA	US Dollar

Doing currency conversion
When performing normal calculation,INPUT Value or calculator results,As display current number on the LCD. For the conversion rates,press the key C1,C2,C3 or C4 and then select the conversion direction by pressing → or ← .Press the = key to perform the conversion.